

## EClassical 3100 High Performance Liquid Chromatography System



EClassical 3100 System is perfected from classical HPLC systems manufactured by our company, the high quality has widely recognized by customer. It is suitable for users who are looking for the versatility and robustness. The excellent features ensure the reliability results and improve working efficiency.

### Characteristics:

- \* Comprehensive and flexible  
Isocratic system, binary gradient system, quaternary gradient system is available. Detection capabilities include DAD, UV/Vis, FL, RI and ELSD.
- \* Stable and reliable  
Advanced USB chip and optoelectronic isolation technology ensuring stable communication.
- \* Simple and safe  
Powerful software makes it simple to control, capture, manage and analyze. Real-time pressure display, maximum and minimum pressure warning ensure the security.

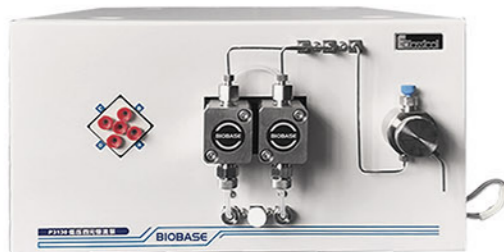


### P3100 High-Pressure Constant Flow Pump:



Item	Specification
Flow Range	0.001~10.000mL/min(step 0.001 mL/min)
Accuracy	≤±0.2%
Precision	≤0.075% RSD
Pressure Range	0-45MPa
Power	AC 220V±10%, 50Hz/80 W
Dimensions/Weight	420*300*175mm(W*D*H)/12kg

### P3130 Low-Pressure Quaternary Constant Flow Pump:



Item	Specification
Flow Range	0.001~10.000mL/min(step 0.001 mL/min)
Accuracy	≤±0.1%(1.000mL/min, 8.5MPa, water, ambient temperature); ≤±2.0%(0.001mL/min~10.000 mL/min, 8.5MPa, water, ambient temperature)
Precision	≤0.075%(1.000mL/min, 8.5MPa, water, ambient temperature); ≤0.1%(0.100mL/min~10.000mL/min, 8.5MPa, water, ambient temperature)
Maximum Working Pressure	63MPa
Communication Methods	UDP Network Communication
Mixed Volume	750μL
Power	AC 220V±10%, 50 Hz/100W
Dimensions/Weight	400*300*180mm(W*D*H)/15 kg



### UV3100 UV-Vis Detector:

Item	Specification
Linearity Range	≥1.8AU(5%) (254nm)
Wavelength Range	190~700nm
Noise	≤±0.5*10 <sup>-5</sup> AU
Drift	≤1.0*10 <sup>-4</sup> AU/h
Cell Path Length	10mm
Power	AC 220V±10%, 50Hz/100 W
Dimensions/Weight	420*300*175mm(W*D*H)/16kg



### DAD3100 Diode Array Detector:

Item	Specification
Linearity Range	≥2.0 AU(254nm)
Wavelength Range	190~800 nm
Noise	≤±1.0*10 <sup>-5</sup> AU
Drift	≤3*10 <sup>-4</sup> AU/h
Power	AC 220V±10%, 50Hz/80W
Dimensions/Weight	500*300*175mm(W*D*H)/18kg



### O3100 Column Oven:

Item	Specification
Temperature Range	Ambient+5~80°C
Accuracy	±0.3°C
Precision	≤0.1°C
Power	AC 220V±10%, 50Hz/130W
Dimensions/Weight	420*300*120mm(W*D*H)/7kg

### Technical Parameters:

Model	EClassical 3100 (Type I)	EClassical 3100 (Type II)	EClassical 3100 (Type III)	EClassical 3100 (Type IV)
Pump	P3100*1	P3100*2	P3130*1(With mixer)	
Detector	UV3100*1			DAD3100(512-diode array)*1
Flow Cell	SC3100*1			SC3000*1
Gradient Mixer	/	TD-1-15*1	/	
Solvent Bottle Tray	TP3100*1			
Sampler Injector	Rheodyne 7725i*1			
Column	Supersil ODS2 5μm ID4.6mm*200mm1			
Workstation	Kromstation*1			Kromstation+PDA
AD Adapter	/			AD3000 adapter
Valve Mounting Frame	ZJ-1*1			
Degasser	/			DG3110*1
System Kit	EClassical 3100*1			
Power Supply	AC220V±10%, 50Hz			
Optional Accessory	S3100 autosampler, column, O3100 column oven, evaporative light scattering detector, differential refractive index detector, fluorescence detector, solvent bottle			
Package Size (W*D*H)	600*440*380mm*2; 580*400*280mm*1	600*440*380mm*3; 580*400*280mm*1	600*440*380mm*2 320*190*230mm*1 500*360*210mm*1	600*440*380mm*3
Gross Weight	15kg; 16kg; 9kg	15kg; 19kg; 9kg	19kg; 18kg; 4kg; 4kg	18kg; 18kg; 16.5kg